

General  
Balance

# General Balance Probiotics



# The core of health, the intestines

## Digestion



Absorbs most nutrients consumed by humans. Producing some vitamins and expelling unnecessary waste.

## Immunity



70% of the body's immune cells live and do a role in preventing invasion of pathogens

## The second brain



Serotonin, 90% of which is secreted in the intestines, is a neurotransmitter that stabilizes the mind.



# Causes of deteriorated intestinal function

Gut health can deteriorate due to factors such as **age, unhealthy diet, and bowel habits**. Harmful bacteria such as E. coli produce toxic substances (ammonia, amines, etc.) in the intestines. These toxic substances are absorbed again in the intestines and spread toxicity throughout our body, posing a threat to our health.

There are many causes that worsen intestinal health, such as **refined sugar, instant foods, low-moisture snacks, excessive meat consumption, long-term use of antibiotics, alcohol and cigarettes, and stress**.



Stress



Antibiotics



Unhealthy diet



Smoking

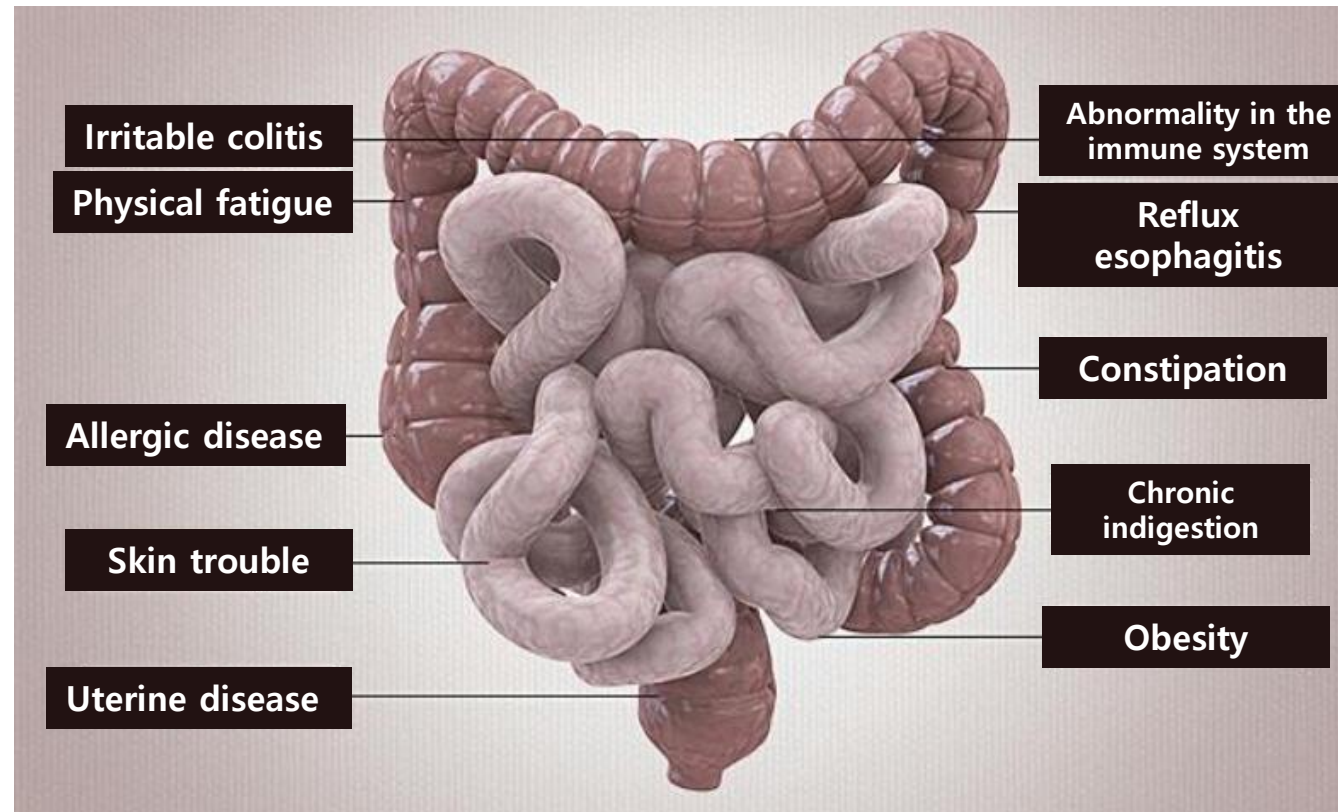


Drinking



# What happens when intestinal function is deteriorated

The cause of various diseases that can be found in anyone is an unhealthy intestine!



# What are probiotics?

Beneficial bacteria that can have healthy effects inside the intestines.

The World Health Organization(WHO) evaluated that 'consuming an appropriate amount of probiotics has the effect of making the host healthy by increasing the activity of beneficial bacteria in the body and reducing the activity of harmful bacteria.'



- **More than 100 types and more than 100 trillion lactic acid bacteria live in the intestines.**
- **Helps digestion and decomposition of food.**
- **A barrier against harmful substances(pathogens).**
- **Facilitates bowel movements.**
- **Increases immunity(effective in preventing adult diseases and infectious diseases).**
- **Helps secrete serotonin and has a calming effect on nerves.**
- **Dietary fiber** is a favorite food of probiotics, so taking it together creates a synergistic effect.
- **Recommended daily intake is 0.1 to 10 billion cfu.**



Rich lactobacillus for a healthy intestinal environment

# PROBIOTICS

- **Capacity** : 75g (2.5g \* 30) ; for 1 month
- **Dosage** : Once a day, take 1 sachet.
- **Ingredients** : 6 types of probiotics + prebiotics + vitamin C



# The key points of the General Balance Probiotics

Guaranteed 3 billion bacteria that inhibit the growth of harmful bacteria and maintain intestinal bacterial balance!

Probiotics that create a healthy intestinal environment with 6 types of lactic acid bacteria!

- + Contains probiotics that survive to the intestines with world-patented double microcapsule technology.
- + Use of carefully selected strains with excellent vitality and strong intestinal adaptability.
- + 3 billion abundant lactic acid bacteria contribute to intestinal health.
- + Maintains intestinal bacterial balance by proliferating lactic acid bacteria and suppressing harmful bacteria.
- + Help smooth bowel movements.

## Functionality of Probiotics



Proliferation of lactic acid bacteria and inhibition of harmful bacteria

Help smooth bowel movements



# 6 types of complex strains

It was manufactured by **carefully selecting strains** with excellent vitality and strong intestinal adaptability.



## Functions of the small intestine :

The main function of the small intestine is to digest and absorb nutrients needed by the body. In addition, it is known that 80% of whole-body immunity depends on small intestine immunity because it serves as the primary gateway to prevent harmful toxins, inflammatory substances, and waste products from entering the human body.

## Functions of the large intestine :

It absorbs moisture from decomposed food and excretes waste.



## Lactobacillus

### 3 types of Lactobacillus living in the small intestine

Lactobacillus acidophilus CBG-C13 (특허 제 10-1655851호)

Lactobacillus rhamnosus CBG-C14 (특허 제 10-1655852호)

Lactobacillus plantarum JBMI F5(특허 제 10-1274467호)

## Bifidobacterium

### 2 types of Bifidobacterium living in the large intestine

Bifidobacterium longum CBG-C11 (특허 제 10-1401530호)

Bifidobacterium lactis CBG-C10 (특허 제 10-1446309호)

## Streptococcus

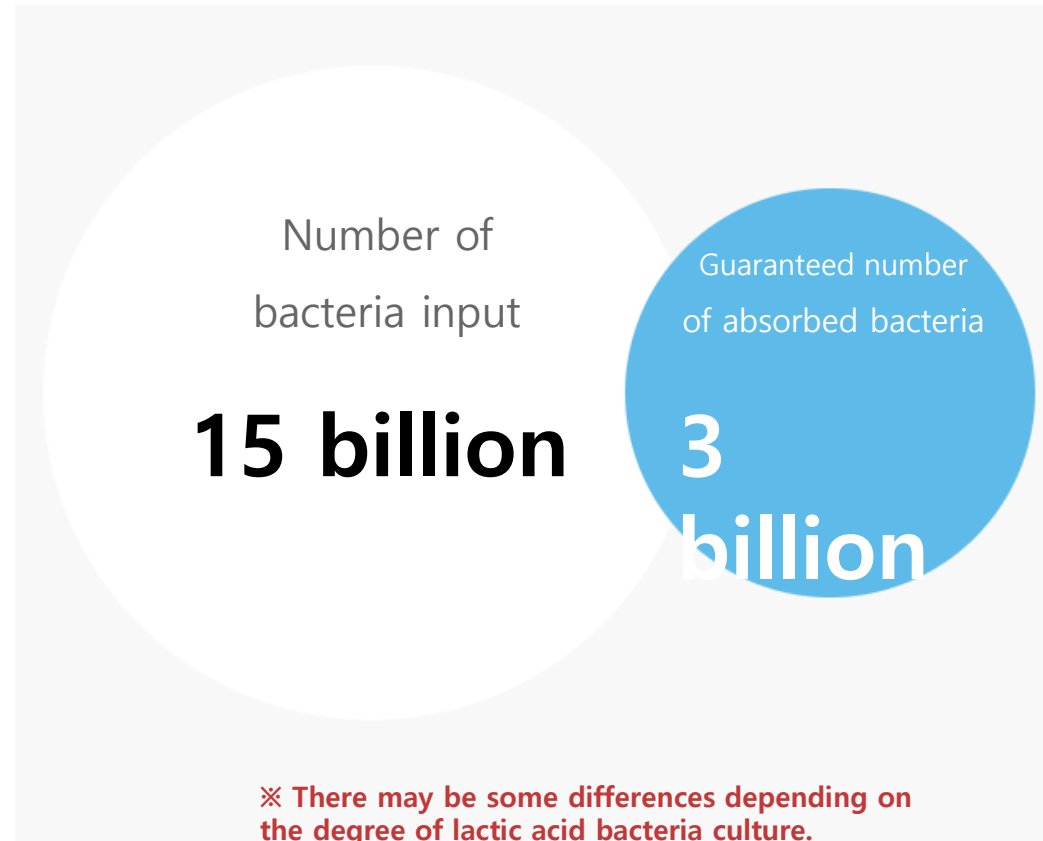
### 1 type of Streptococcus that lives in the small and large intestines

Streptococcus thermophilus CBG-C19 (특허 제 10-1655856호)



# Guaranteed number of bacteria : 3 billion cfu.

General Balance Probiotics inject 15 billion lactic acid bacteria to ensure intake of 3 billion probiotics.



# Patented double-layer microcapsule

The patented double-layer microcapsule technology is applied to protect lactic acid bacteria that are sensitive to the external environment and ensure that they reach the intestines safely.



Double-layer microcapsule

Double-layer microcapsule that can survive heat, humidity, and strong acid



**Excellent effect even when consumed in small amounts**



Double-layer microcapsule patents

- Domestic(Korean) patent: 10-0782984
- Japanese Patent: 4108613

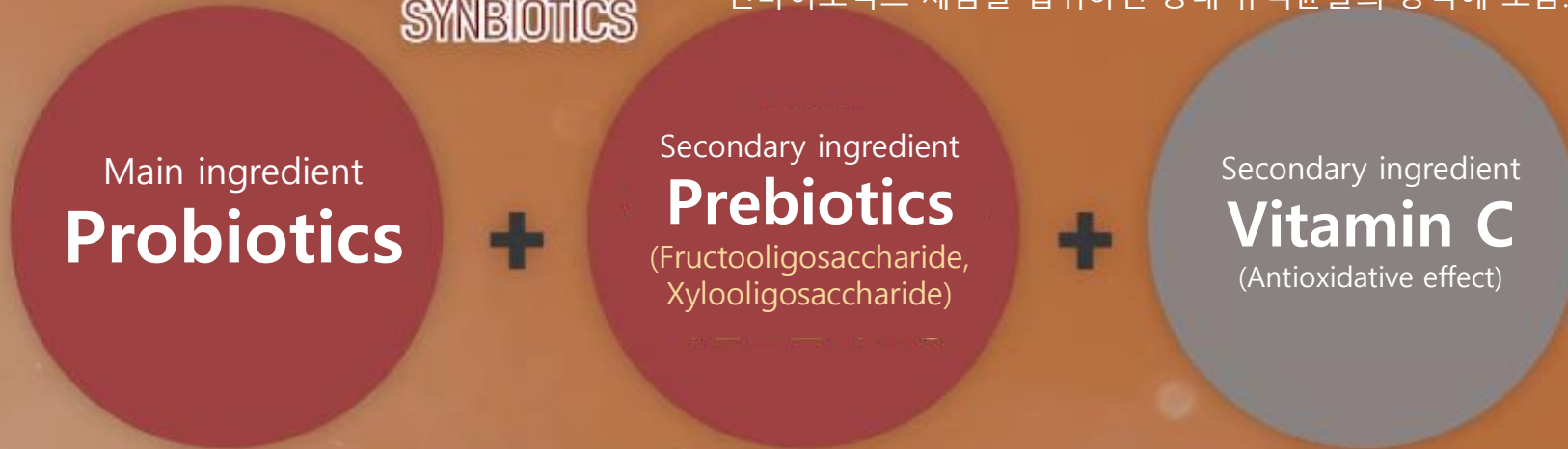


# Synbiotics Lactobacillus

신바이오틱스  
SYNBIOTICS

A mixture of probiotics, which are live beneficial bacteria, and prebiotics, which are food for beneficial bacteria. Taking synbiotics greatly helps in 혼합 the growth of beneficial bacteria in the intestines.

신바이오틱스 제품을 섭취하면 상내 유익균들의 증식에 도움.



It serves as food for beneficial bacteria in the large intestine and promotes their growth and activity.

It is a **non-digestible** food ingredient that improves the health of beneficial bacteria hosts.



# Synbiotics Lactobacillus

## No other additives

Manufactured without the use of additives such as excipients, flavoring agents, and colorants used for production efficiency or product stabilization.



Silicon dioxide



Magnesium stearate



Hydroxypropyl-methylcellulose



Synthetic flavoring agent



Colorants

## Intake and Dosage

### Intake



Once a day, 1 Sachet

### Dosage



It is recommended to take it on an empty stomach, and for those with stomach problems, it is recommended to take it after a meal.

### Storage method



Cool place



# Recommended for



- ☑ Those who have difficulty defecating due to poor bowel movements.
- ☑ Those with deteriorated intestinal function due to dieting or irregular eating.
- ☑ Elderly people whose bowel function declines as they age
- ☑ Office workers who are concerned about their intestinal health due to busy work and frequent company dinners
- ☑ Those who spend a lot of time sitting and are less active

